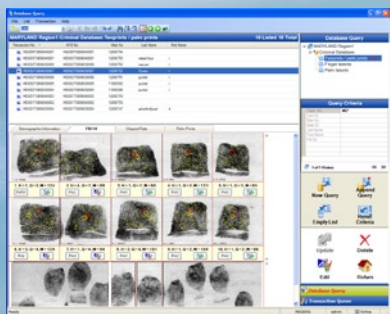
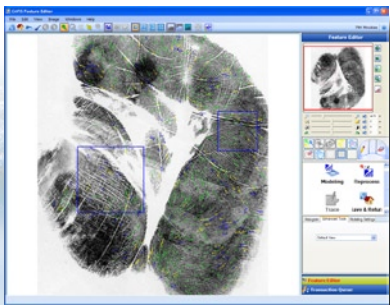


CAFIS 6.0

Features and Highlights

Cogent's latest CAFIS client interface, CAFIS 6.0, provides an intuitive, user-friendly navigation and multitasking environment that enhances user productivity. While transactions are processed in the background, the user can perform other tasks, allowing multiple tasks to be performed rapidly and accurately. CAFIS 6.0 is equipped with a comprehensive set of powerful tools that analyze and enhance the quality of prints, thereby increasing the probability of a hit.

CAFIS 6.0 offers you a wide array of features and functions for processing tenprints, finger latents, palm prints, and palm latents. The feature and function list includes:



- **User-friendly Navigation:** An icon toolbar and shortcut control panel have been added to facilitate users in locating the most commonly used functions.
- **Multitasking Environment:** The user can open multiple processing threads with the CAFIS 6.0 client interface. Several tasks can be accomplished in parallel to increase the user's productivity.
- **Ease of Access to Information:** The main transaction processing queue is now divided into two panes: a top pane that lists high-level descriptions for all of the transactions and a bottom pane that provides detailed image and demographic data for a selected transaction from the top pane. The various types of print images and demographic data are easily accessed by clicking on the preferred tab in the bottom pane.
- **Built-in Quality Check:** CAFIS 6.0 automatically creates an attribute map for each print: overall image quality, number of detectable minutiae, completeness of the print, sequence of the prints, ridge flow clarity, improperly clipped flat fingerprints, etc.
 - The sequence correction interface allows the user to simply click on an image to fix the sequence of the prints.
- **Automatic Pattern Classification:** To minimize the possibility of a classification error, the system will assign a primary and a secondary classification for user review and edit.

Familiar - Intuitive - Productive

- **Powerful Latent Print Image Enhancement Tools:**
 - Viewing Tools: view negative version of the image; view mirror opposite of the image; view the image upside down; optimize the image; rotate the image; enlarge the image; reduce the size of the image; adjust the brightness/contrast of the image; switch the background color between black, white, and blue; and view the image in 3D
 - Advanced Image Enhancement Tools: apply balancing to the image, apply linear crispening to the image, apply statistical differencing to the image, apply unsharp masking to the image, apply high-boost/pass filtering to the image, apply grayscale rescaling to the image, and apply morphological processing to the image
 - Resizing Tools: resize the image by a given scale, resize the image by testing the ruler, resize the image by ridge count
 - Adjusting the histogram to change the dynamic grayscale color range of the image
 - Clipping and saving latent images captured at any orientation
 - Automatic extraction of the latent image's feature set
 - Adding/deleting minutiae, cores, and deltas
 - Modifying ridge flow
 - Modeling an extremely poor quality latent image to extract ridges
 - Verifying/modifying the ridge count
- **Hit Verification:** After CAFIS 6.0 returns the results from a search, the user can perform a side-by-side comparison of the search print against the candidate hit print from the database. There is a "film-strip" reel under each image containing thumbnail images for all of the prints in both the search record and the candidate hit record.
- **Court Exhibit Creation:** The user can highlight minutiae matching markers on enrollee and database prints, add case specific information, print or save court exhibits as image files.
- **Extensive Database Queries:** The user can retrieve narrow or broad query results based on the criteria provided for the search. CAFIS 6.0 accepts wildcard searches, allowing the user to enter partial information to narrow the search results. In addition, the database search tool allows the user to rapidly switch the search from the tenprint/palm print database to the unsolved latent database.

