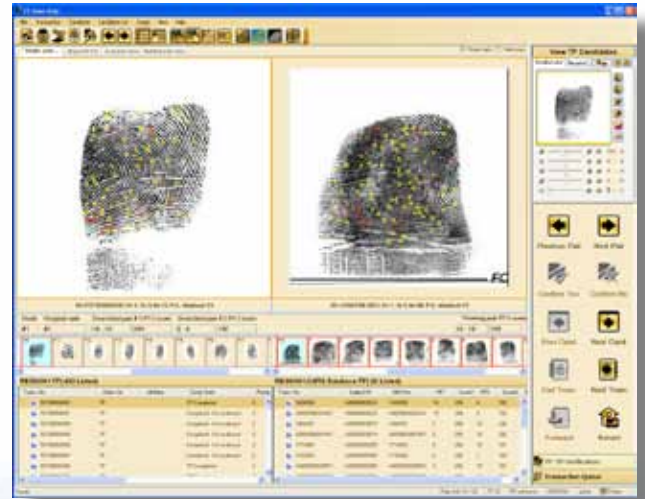


CAFIS™

Automated Fingerprint/Palm Print Identification System

3M Cogent's Automated Fingerprint and Palm Print Identification System, is a multifactor, scalable, and customizable software package that allows you to perform a wide range of tasks for processing, editing, searching, retrieving, and storing fingerprint images and subject records. It includes a variety of automated identification solutions - from a desktop AFIS to distributed networked solutions for local, regional, and national systems. As one of the most accurate systems in the world, CAFIS ensures service resiliency while providing information safety through the use of built-in safeguards such as fault tolerant architecture, disk mirroring, automated database backups, and disaster recovery options.



The system uses a unique multi-stage matching process to increase accuracy along with accuracy-enhancing workloads that can only be supported by systems capable of extremely high matching throughput rates. These include using 100% database penetration for all searches, matching latents to both flat and rolled fingerprints in the target database, and matching latents to multiple records per subject. 3M Cogent's field-proven biometric technology is widely used by cities, counties, states, and national governments as a cost-effective and modular data flow computing technology to meet their needs today and well into the future.

CAFIS provides the solution for agencies that:

- Require fingerprint/palm print matching systems with databases of up to tens of millions of records
- Need rapid response times
- Must support a few users to thousands of users
- Want to include LiveScans and wireless biometric input devices
- Require integration of existing information systems
- Need to provide secure Web-based identification services

3M Cogent is unique among AFIS vendors in that we use non-proprietary NIST record formats for our AFIS database records. As a result, the system can be integrated with external AFIS systems, computerized criminal history systems, LiveScan, handheld wireless devices, secure Web-based Internet solutions, as well as other information systems.

Most Effective Crime Solving Tool

Superior Searching Capability: 100% penetration for tenprint, latent, and palm print searches. Performs searches in a variety of ways: tenprint to tenprint, tenprint to unsolved latent, latent to tenprint, latent to unsolved latent, palm to unsolved palm latent, palm latent to palm, and palm latent to unsolved palm latent.

Scalability: Modular and expandable architectural elements that can be scaled to meet any agency's database size, throughput, and integration requirements.

Fast: CAFIS provides rapid response time. Multiple biometric matchers can process the workload in parallel to linearly increase system throughput.

User-friendly navigation: An icon toolbar and a shortcut control panel facilitate access to the most commonly used functions.

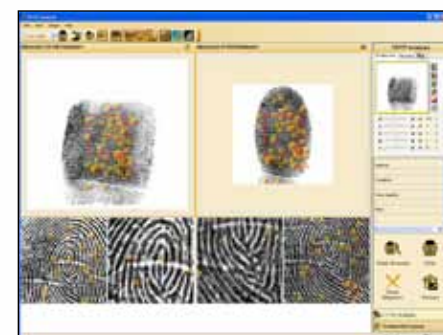
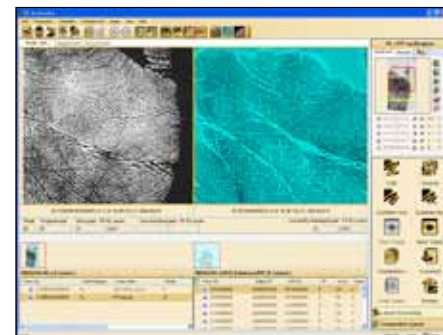
Multitasking Environment: The user can open multiple processing threads allowing several tasks to be accomplished in parallel to increase the user's productivity.

Built-in Quality Check: CAFIS automatically creates an attribute map for each print: overall image quality, number of detectable minutiae, completeness of the print, sequence of the prints, ridge flow clarity, improperly clipped flat fingerprints, etc.

Powerful Latent Print Image Enhancement Tools: Includes viewing tools, advanced image enhancement tools such as color channeling and HDR, histogram, clipping, automatic extraction of latent image's feature set, adding/deleting minutiae/cores/deltas, modifying ridge flow, modeling, and verifying/modifying ridge count.

Court Exhibit Creation: The user can highlight minutia matching markers on enrollee and database prints, add case specific information, print or save court exhibits as image files.

Extensive Database Queries: The user can retrieve narrow or broad query results based on the criteria provided for the search. CAFIS accepts wildcard searches, allowing the user to enter partial information to narrow the search results.



*Product specifications are subject to change without notice.

Beyond Comparison™